

EVENT ANNOUNCEMENT



FOR IMMEDIATE RELEASE

DATE: January 30, 2019
CONTACT: Molly Barnes, WLAC Artist in Residence
(310) 553-7626 | Molly_Barnes@hotmail.com
9000 Overland Ave. - Culver City, CA 90230

L.A. Bridges and Artisans PANEL DISCUSSION WITH ARTISTS WEDNESDAY, FEBRUARY 6

Before the L.A. Bridges and Artisans show closes at the WLAC Gallery, several of the featured artists will discuss their work and bridges – literally and symbolically -- in art and design.

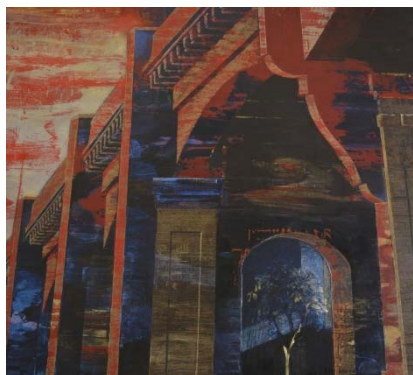
WHO: Panelist include artists David Eddington, Carole Garland, Velda Ishizaki and Stuart Rapeport.

WHEN: Wednesday, February 6 | 5:00 – 7:00pm

WHERE: Fine Arts Gallery | West Los Angeles College
9000 Overland Avenue, Culver City, CA 90230
Free parking available in the adjacent parking structure

ADMISSION: Free

ABOUT THE SHOW



Prints by world-renowned architect Frank Gehry are featured at the L.A. Bridges and Artisans exhibit at West Los Angeles College running now through February 8, 2019. Gehry is currently overseeing the L.A. River restoration project including the reinstallation of the historic downtown Los Angeles 6th Street bridge.

“I thought it would be wonderful to deify the bridge,” said Molly Barnes, well-known art curator and artist in residence at West.

L.A. Bridges & Artisans...continued

And Barnes knows her bridges. Her grandfather, Joseph A. Moore had a hand in the construction of the iconic San Francisco-Oakland Bay Bridge.

Other artists featured are David Eddington, Barbara Thomason, Carole Garland and Velda Ishizaki. Eddington, an artist from England who lives in Venice, is fascinated by the Los Angeles bridges. The *Santa Monica Mirror* described his bridges series as taking each bridge “and given it a color palette that conveys its’ spirit as he sees it.”

Thomason spent five years celebrating Los Angeles’ freeways, buildings, landscapes and bridges through her art. She was also part of the well-known Gemini G.E.L. (Graphics Editions Limited) on Melrose Avenue, publishers of limited-edition handmade prints.

Gazing at the hung works are wooden sculptures by Stuart Rapeport. Their likenesses include Cheech Marin of the comedy duo Cheech and Chong; Marcel Duchamp, regarded as one of three artists who helped define the revolutionary development in the plastic arts; and *LA Times* art critics William Wilson (deceased) and Hunter Drohojowska.

The exhibit is curated by Barnes. In addition to sharing her wealth of experience and knowledge with the college’s aspiring artists, she coordinates free exhibits and lectures which are open to the public.

West Los Angeles College is located at 9000 Overland Avenue, Culver City, CA 90230. The college is a ACCJC-accredited community college providing full-time, part-time and online paths to university transfer and career preparation.

###